

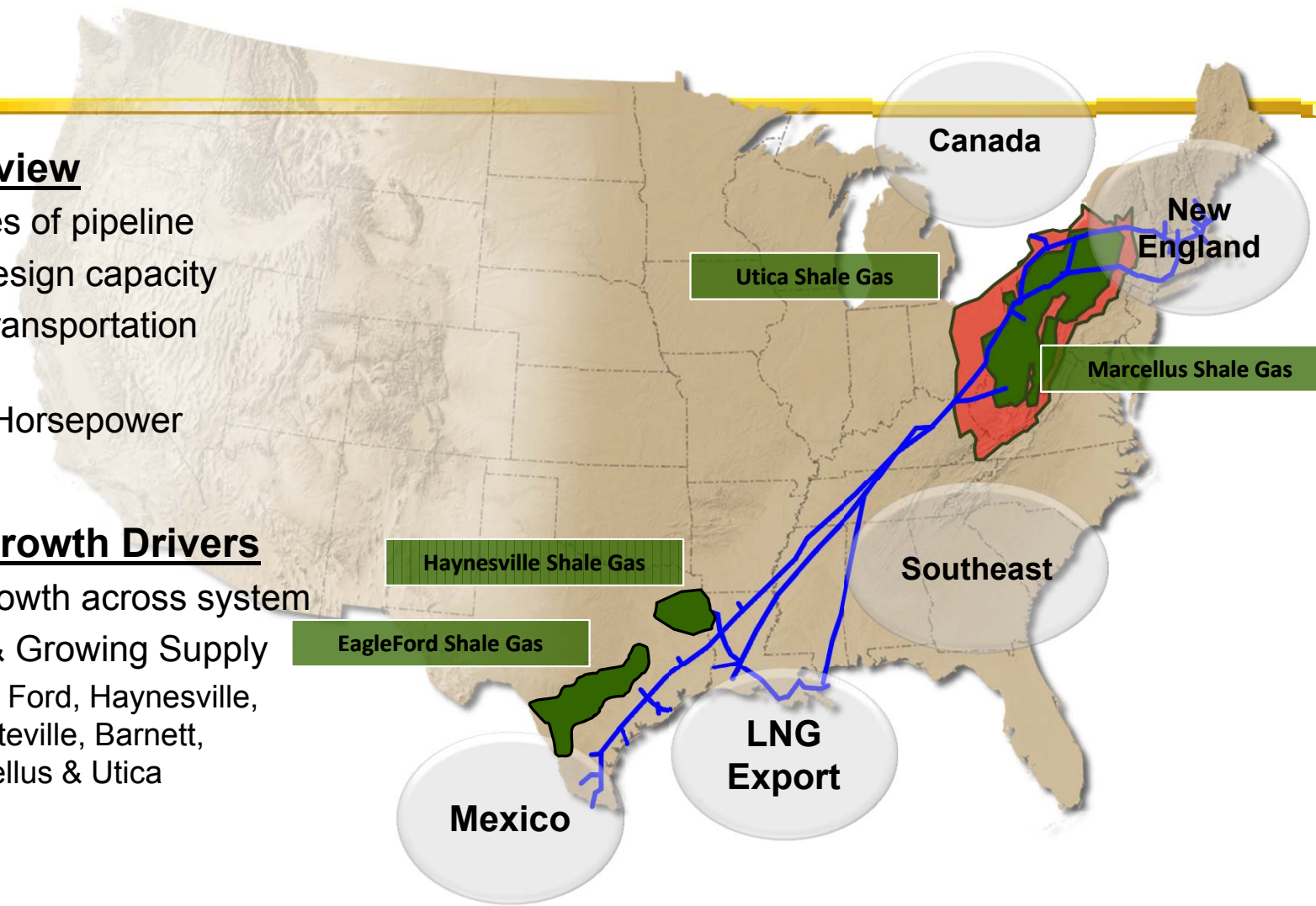
Tennessee Gas Pipeline

System Overview

- 14,000 miles of pipeline
- 9 Bcf/d – design capacity
- >500 firm transportation customers
- 1.4 Million Horsepower

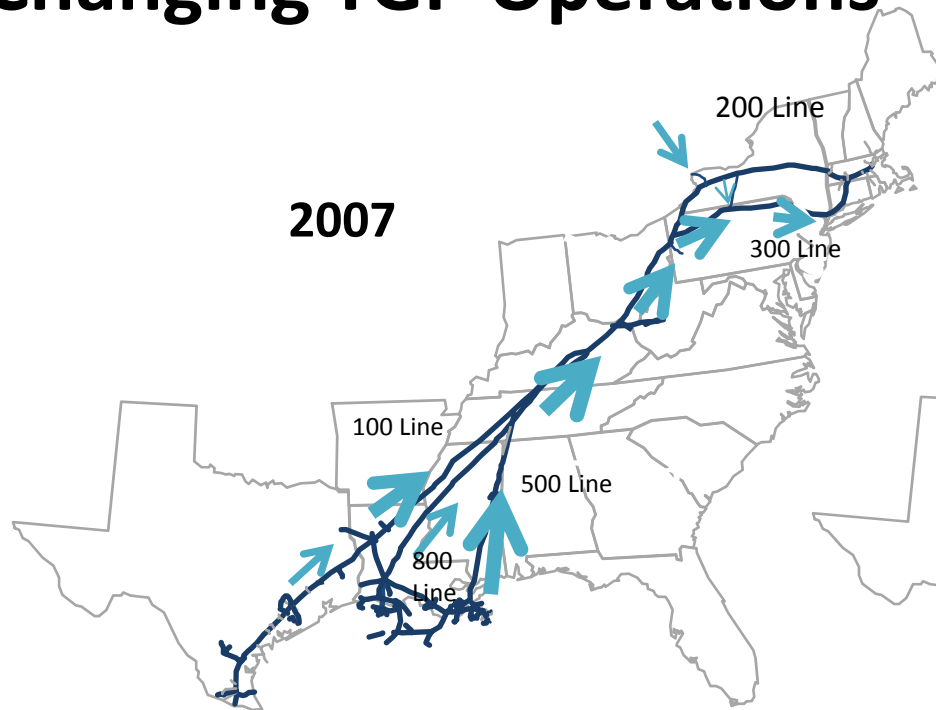
Long-term Growth Drivers

- Demand growth across system
- Abundant & Growing Supply
 - Eagle Ford, Haynesville, Fayetteville, Barnett, Marcellus & Utica



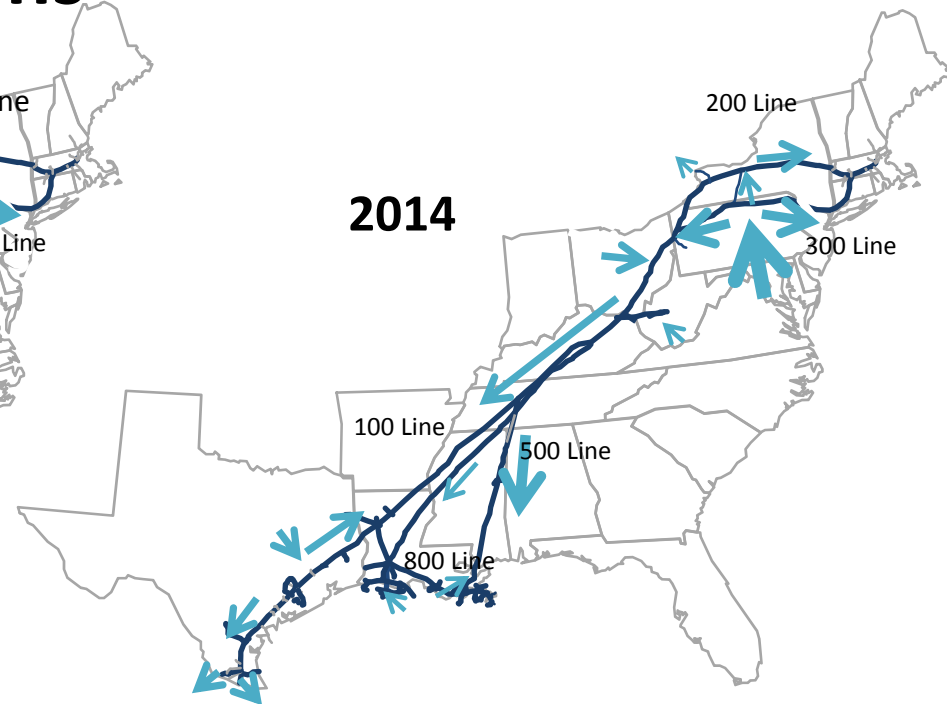
Linking the best markets to the best supply basins

Changing TGP Operations



2007

- Designed to deliver TX/LA supply rate-able to Northeast markets
- High utilization of 100 line, high seasonal utilization of 200 and 300 lines
- Consistent imports on the Niagara Spur
- Maintenance typically performed in summer months May – Oct



2014

- Marcellus receipts > 3.5 Bcf/d serving Northeast markets, Utica receipts transporting to southern markets
- High utilization of 100 line in Zone 1 southbound, high use of 200 line southbound in Kentucky, high utilization of 200 & 300 lines
- Consistent exports on Niagara Spur and to Mexico
- Maintenance performed during mutually agreeable time periods, full system utilization all year round